

# B.I.C. AIRCRAFT DIVISION



**bic.** CARPETS



## Company presentation

B.I.C.-Carpets (Belgian International Carpets) was established in 1956.

Our Aircraft Division, has been manufacturing aircraft carpets for over 40 years for civil and commercial aviation. With different looms available, we can produce a wide range of high quality aircraft carpets.

All qualities meet the FAA/FAR directions as well as ABD 0031/BMS 7238/39 standards. Our qualities are made of the finest wool including a Bekinox anti static fiber to reduce the electrostatic charge.

The production includes both 1,2 and 3 frame looppile products and also cut and loop various constructions. Normal standard carpets with even and / or stranded threads are made as well. B.I.C.-carpets has advanced CAD design facilities, so the customer gets exclusive pattern, colours and carpets.

The recognition for these important basic values was ensured when the company obtained the EN 9100/AS 9100 certificate, a quality label that gives the company's employees recognition for their design, development, production and sales skills.





## Discover our range of ultra light weight carpet

*A new ultra lightweight carpet is being introduced.*

B.I.C.- Carpets sets the first steps with a revolutionary carpet. This carpet boast a significant difference in weight compared to standard carpet.

“The ultra lightweight carpet is 1050 grammes per square metre compared to 1800 for standard carpet”.

B.I.C. is aware of the tough competition and has stepped up the game and made the carpets look different to traditional ones and increased the strength and durability of its products. “We have run methods of testing for burning behaviour, anti static, colour and surface appearance to determine changes in appearance of textile floor coverings. “We found besides ultra light weight coverings, which are non - carpet, our carpets can deal with tough stains as well as absorb dirt and dust. We have worked hard in developing these new programs and look to help airlines that care about fuel burning savings and that focus on cost efficiency.

By using Bic Ultra Light Weight carpet will airlines not only save money on fuel but also on the cost of purchasing carpet:

**1. Fuel saving cost:** The weight reduction of the Bic carpet compared to the average aviation carpet is 700 gr/ m2. Considering that every kg cost about €120 in fuel per year will the Bic carpet result in the following fuel savings per year : B737 / A320 : +/- 104 sq/m2 of carpet x 0,7 kg weight saving x €100 = € 7.280 per aircraft per year in fuel savings.

**2. Savings in carpet cost:** The Bic Ultra Light Weight carpet is about 25 % cheaper compared to traditional aviation carpet.

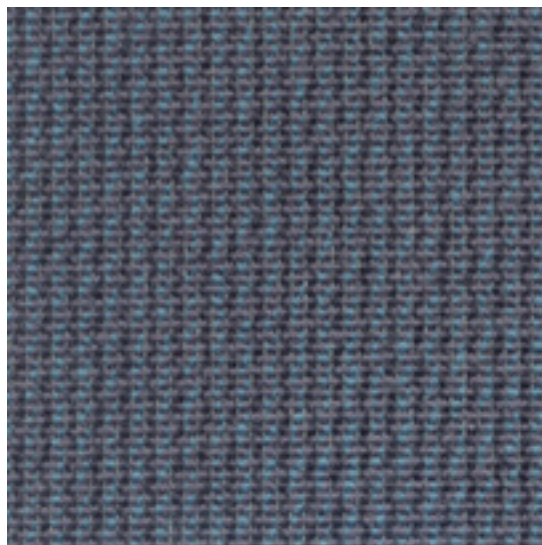
B.I.C.-Carpets is an EN 9100 certified company.







AC 1221



AC 1242



AC 1250



AC 1254

## Technical data

### Pile composition

100 % new virgin wool and antistatic fibres

### Backing

synthetic latex, flame retardant

### Pile weight

± 430 g/sqm ISO 8543-EN 1307

### Total weight

± 1050 g/sqm ISO 8543-EN 1307

### Pile height

± 1,5 mm ISO 1766

### Total height

± 3 mm ISO 1765

### Knots

± 89.600/sqm ISO 1763

### Construction

1-frame carpet ISO 2424

### Burning behaviour

FAR 25.853(a) App.F part I (a)(1)(ii) : last issue

### Electrostatic behaviour

< 2 kV ISO 6356

### Dimension stability

<=± 0,5% ISO 2551

### Standard width

400 cm or 200cm ISO 3018





## High Quality Aircraft Carpet

*High Quality Aircraft Carpet : extra durability resulting in fewer changes of carpet in the cabin...*

These products are developed with special attention to durability, design and color to ensure a top quality carpet. We made the carpet stronger without increasing the total weight of the product.

Airlines will make considerable savings because they need less carpet to purchase and to install. Furthermore will there be less carpet to dispose of and will more passengers enjoy a clean and nice carpet. Check out these products on the next page.

B.I.C.-Carpets is an EN 9100 certified company.







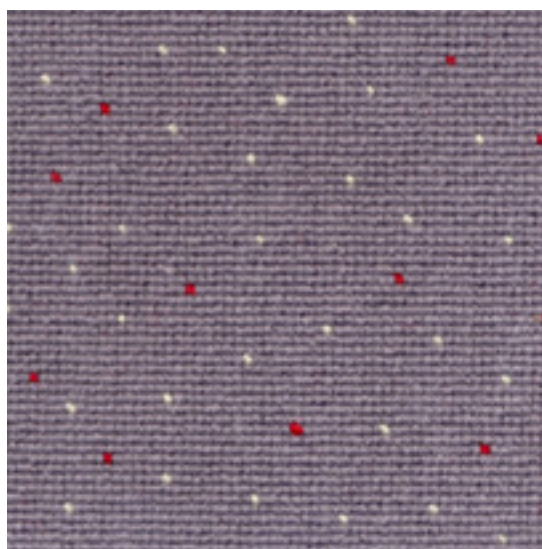
AC 1130



AC 1165



AC 1154



AC 1201

## Technical data

### Pile composition

100 % new virgin wool and antistatic fibres

### Backing

synthetic latex, flame retardant

### Pile weight

± 977 g/sqm ISO 8543-EN 1307

### Total weight

± 1600 g/sqm ISO 8543-EN 1307

### Pile height

± 2 mm ISO 1766

### Total height

± 4 mm ISO 1765

### Knots

± 102.400/sqm ISO 1763

### Construction

1-frame carpet ISO 2424

### Burning behaviour

FAR 25.853(a) App.F part I (a)(1)(ii) : last issue

### Electrostatic behaviour

< 2 kV ISO 6356

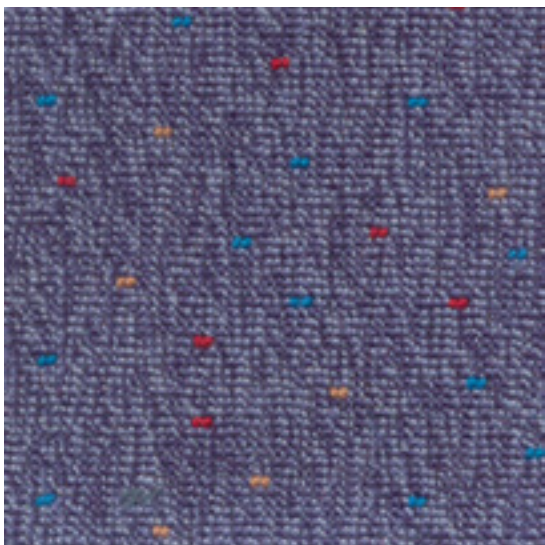
### Dimension stability

<=± 0,5% ISO 2551

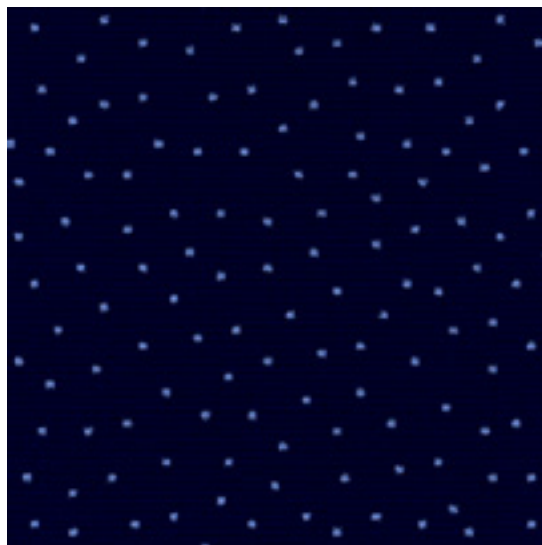
### Standard width

200cm ISO 3018





AC 1223a



AC 1231

## Technical data

### Pile composition

100 % new virgin wool and antistatic fibres

### Backing

synthetic latex, flame retardant

### Pile weight

± 977 g/sqm ISO 8543-EN 1307

### Total weight

± 1600 g/sqm ISO 8543-EN 1307

### Pile height

± 2 mm ISO 1766

### Total height

± 4 mm ISO 1765

### Knots

± 102.400/sqm ISO 1763

### Construction

1-frame carpet ISO 2424

### Burning behaviour

FAR 25.853(a) App.F part I (a)(1)(ii) : last issue

### Electrostatic behaviour

< 2 kV ISO 6356

### Dimension stability

<=± 0,5% ISO 2551

### Standard width

200cm ISO 3018

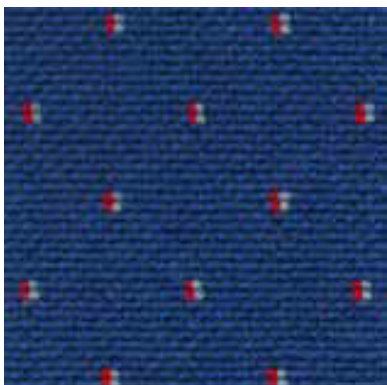




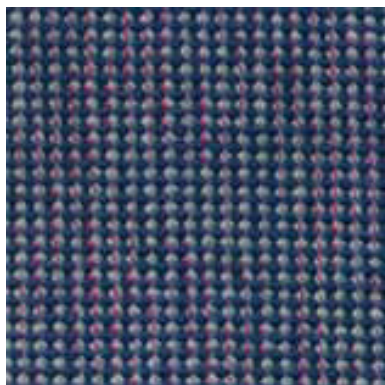


**AIRCRAFT REALITY**

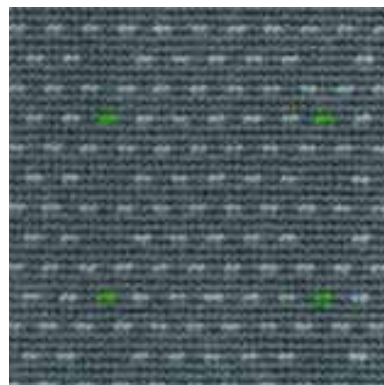




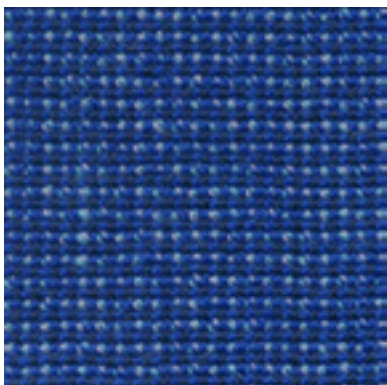
AC 1019



AC 1021



AC 1024



AC 1026



AC 1028



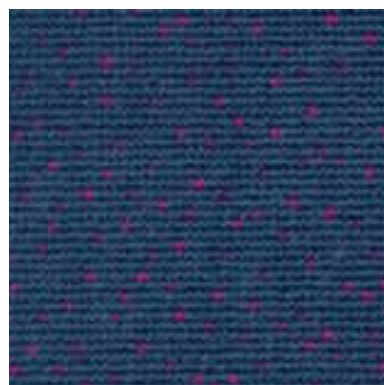
AC 1031



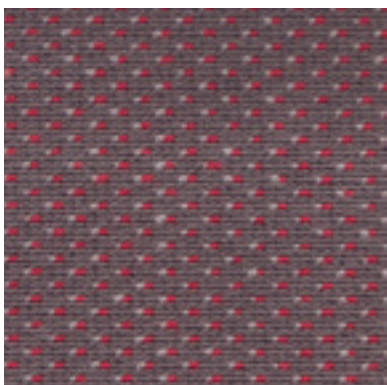
AC 1033



AC 1036



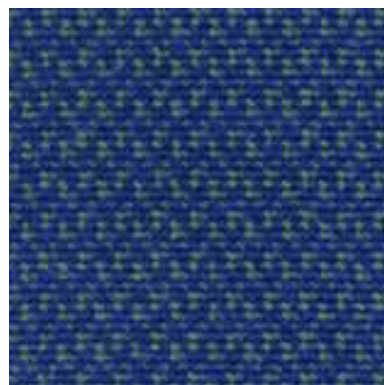
AC 1037



AC 1039



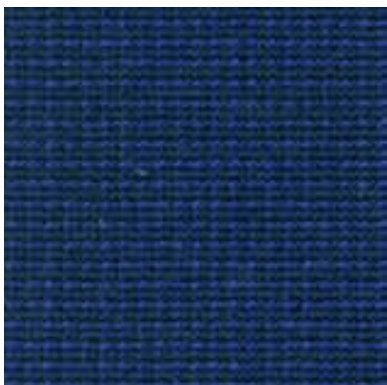
AC 1040



AC 1041



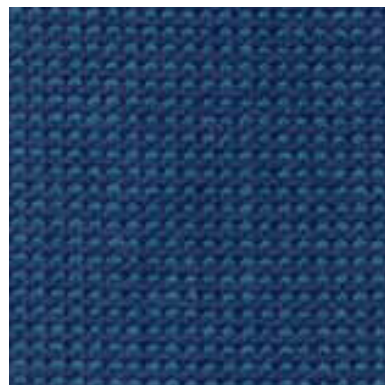




AC 1043



AC 1043d



AC 1044



AC 1047



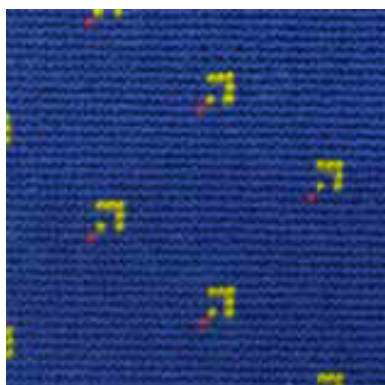
AC 1048



AC 1054



AC 1059



AC 1060



AC 1062



AC 1066



AC 1075



AC 1077



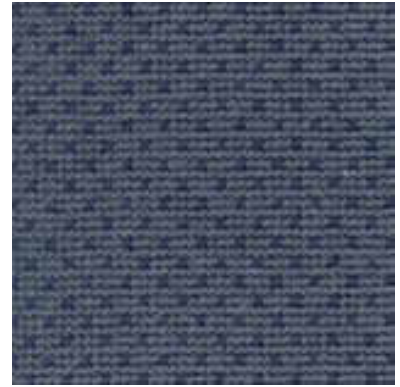




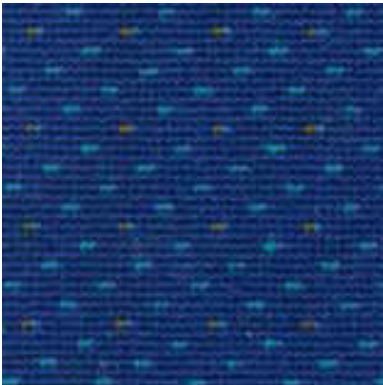
AC 1083



AC 1084



AC 1085



AC 1086



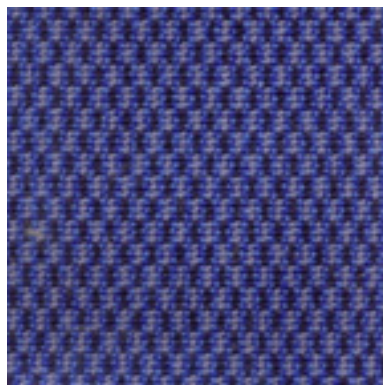
AC 1088



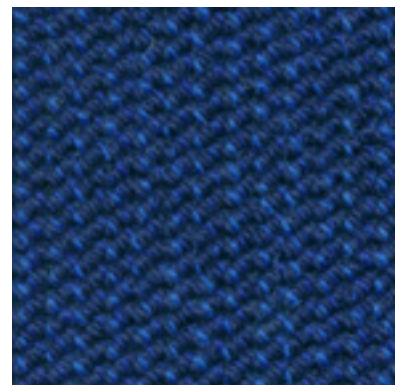
AC 1094



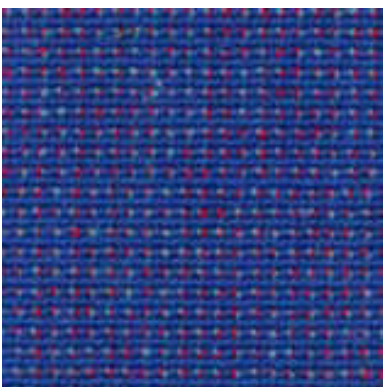
AC 1095



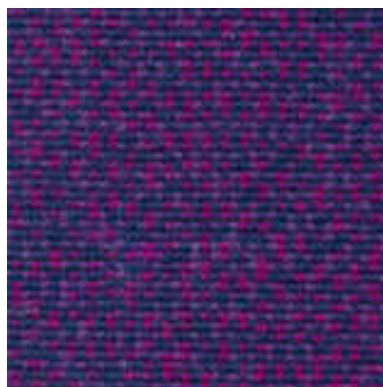
AC 1098



AC 1100



AC 1121



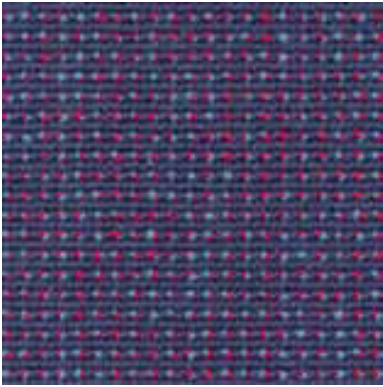
AC 1128



AC 1130







AC 1131



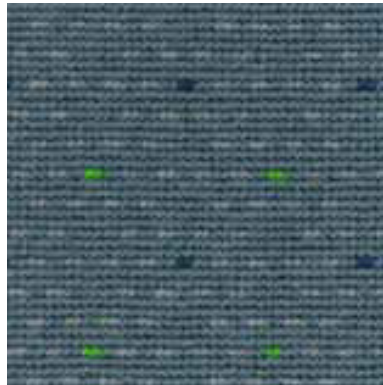
AC 1132



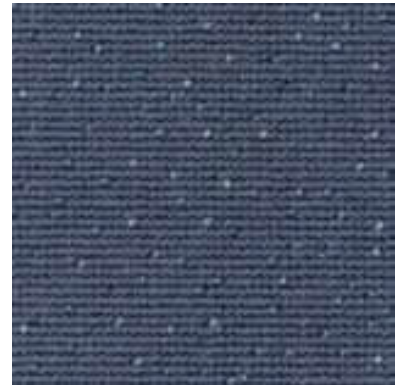
AC 1135



AC 1136



AC 1138



AC 1139



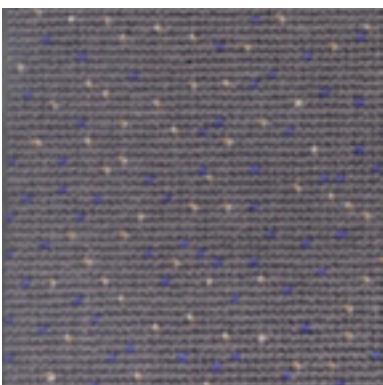
AC 1140



AC 1141



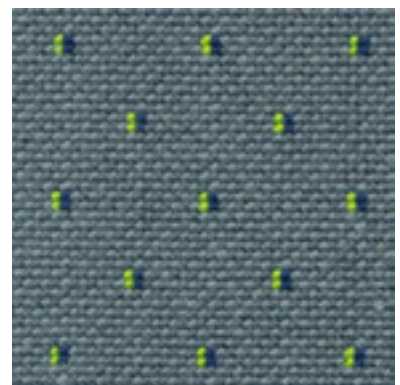
AC 1142



AC 1146



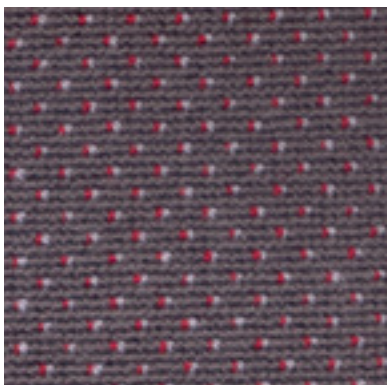
AC 1147



AC 1151



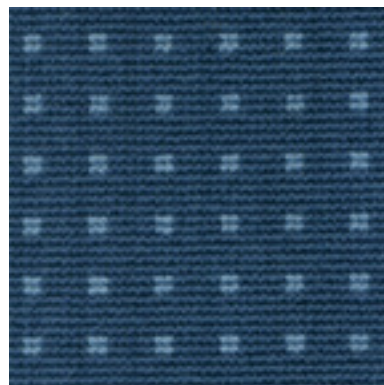




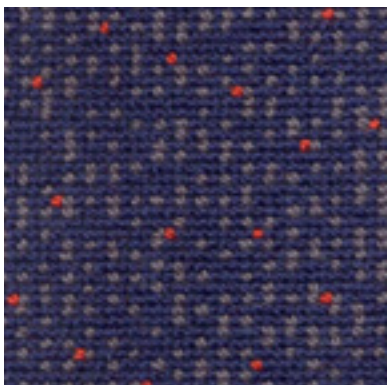
AC 1153



AC 1154



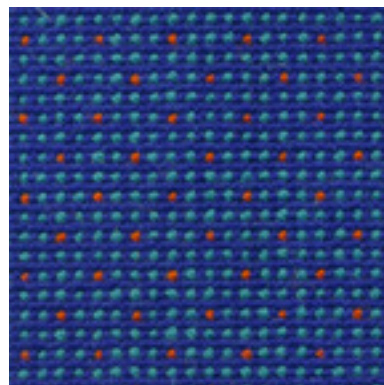
AC 1156



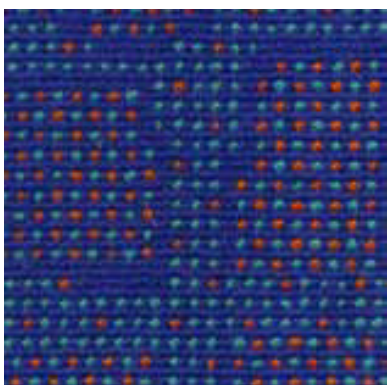
AC 1156b



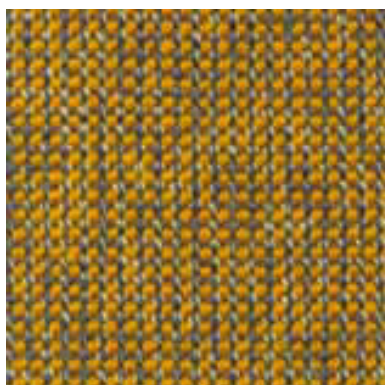
AC 1158



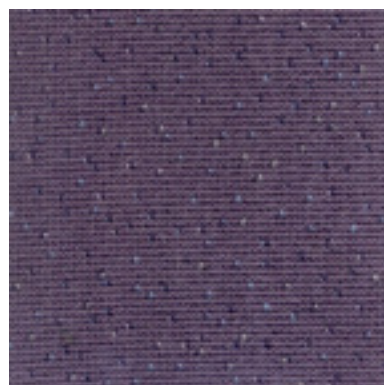
AC 1160



AC 1161



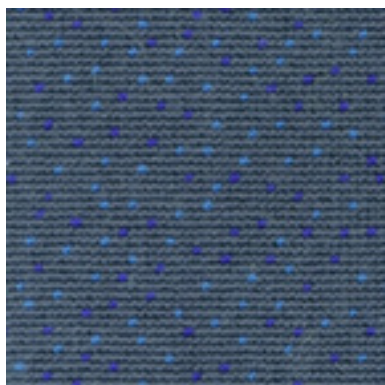
AC 1163



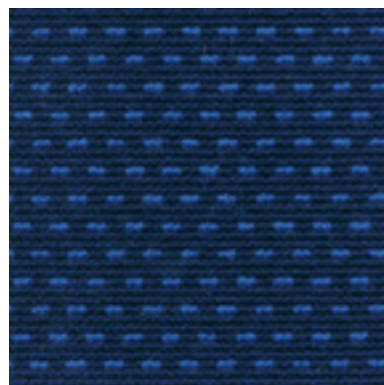
AC 1165



AC 1166



AC 1168



AC 1169



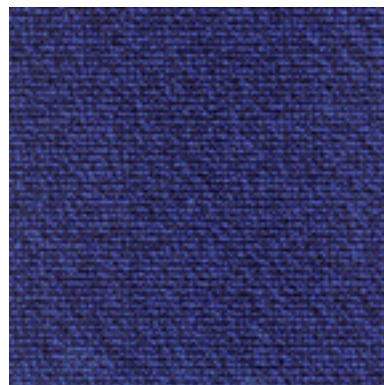




AC 1170



AC 1185



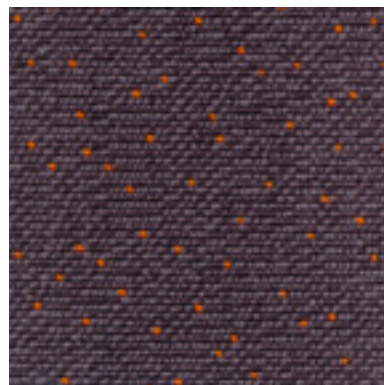
AC 1192



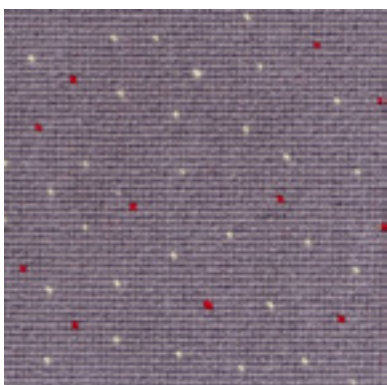
AC 1194



AC 1195



AC 1199



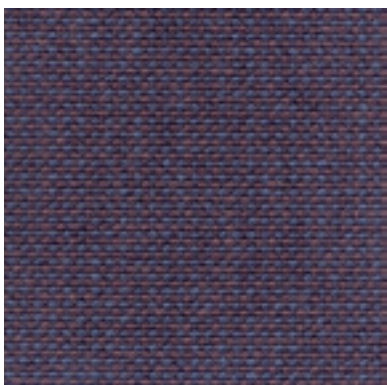
AC 1201



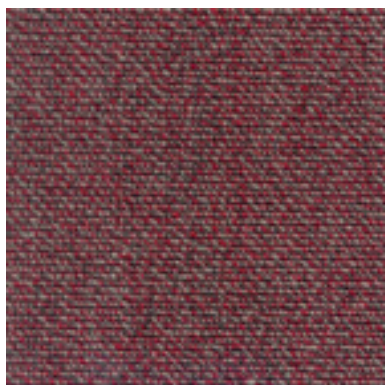
AC 1205



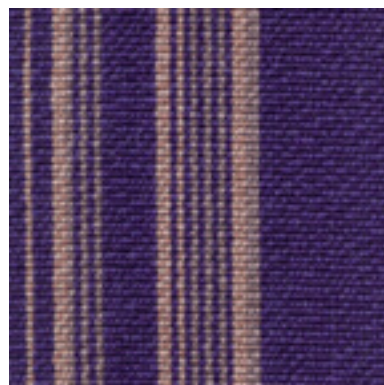
AC 1207



AC 1208



AC 1209



AC 1215







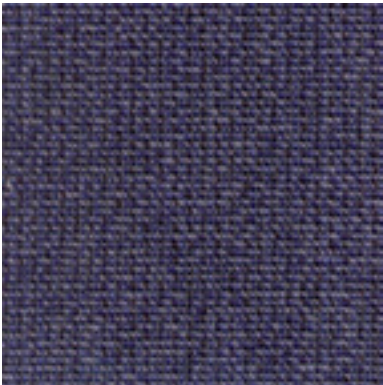
AC 1216



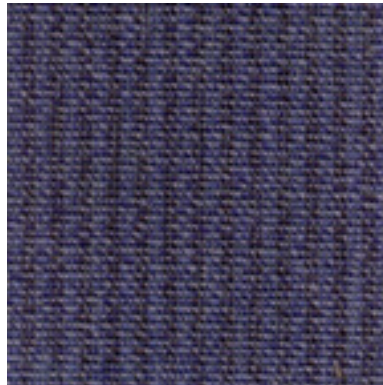
AC 1217



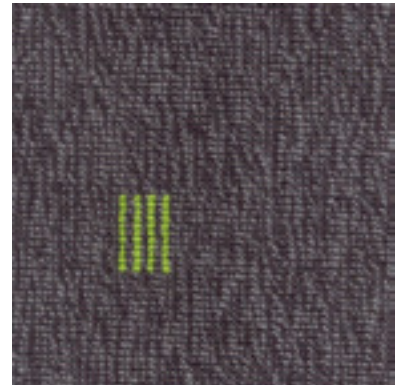
AC 1218



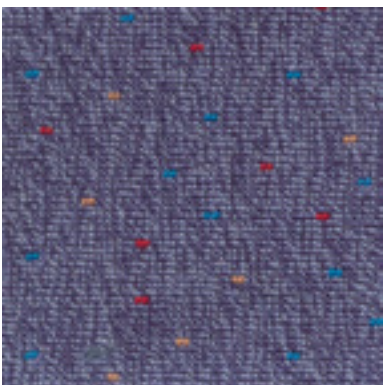
AC 1220



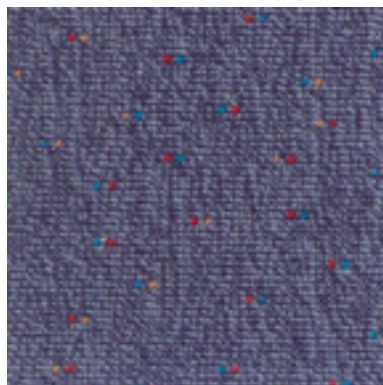
AC 1221



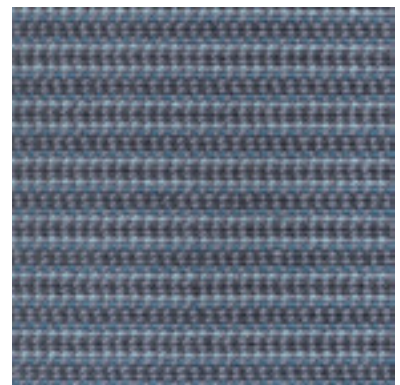
AC 1222



AC 1223a



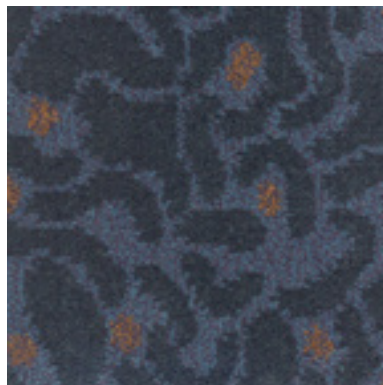
AC 1223b



AC 1224



AC 1225



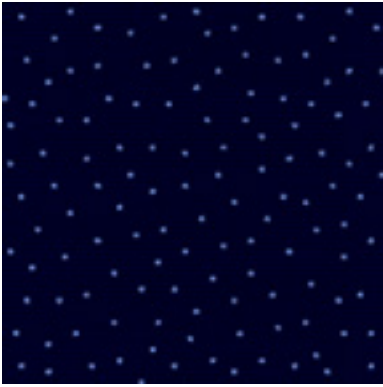
AC 1226



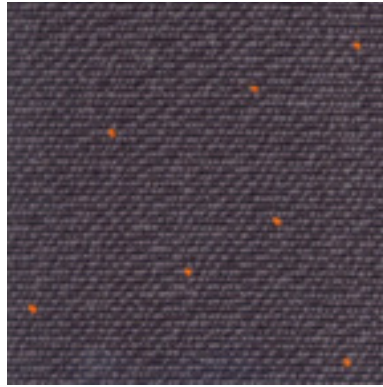
AC 1230



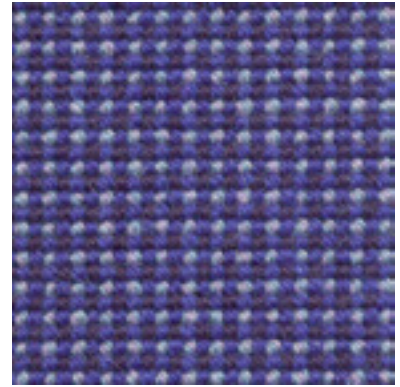




AC 1231



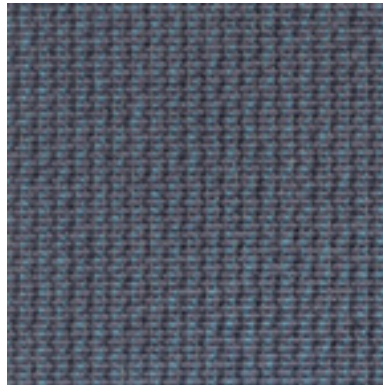
AC 1232



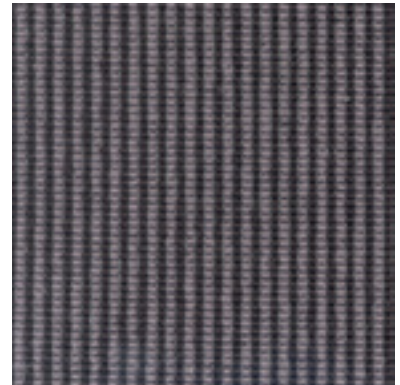
AC 1236



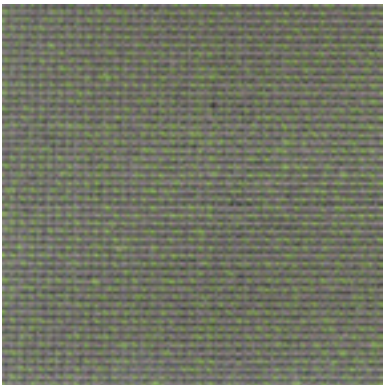
AC 1238



AC 1242



AC 1243



AC 1244



AC 1245



AC 1246



AC 1247



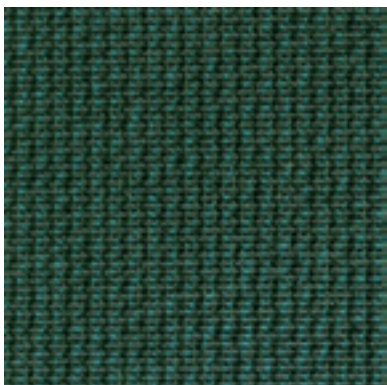
AC 1267



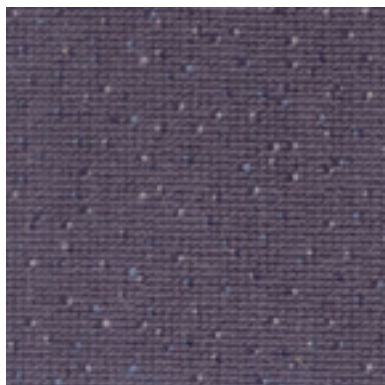
AC 1269



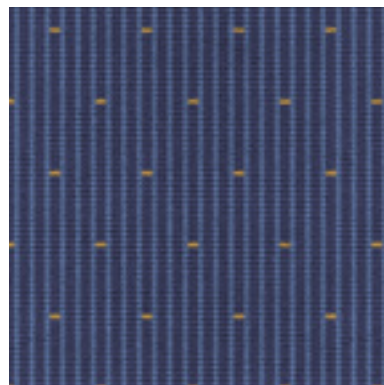




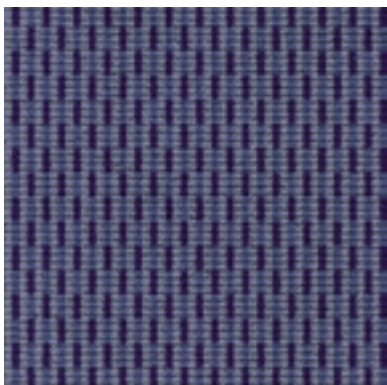
AC 1270



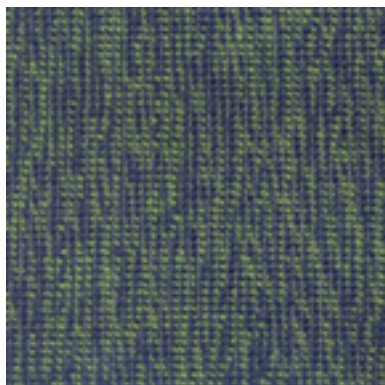
AC 1274



AC 1276



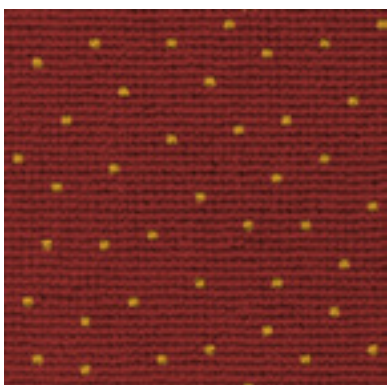
AC 1277



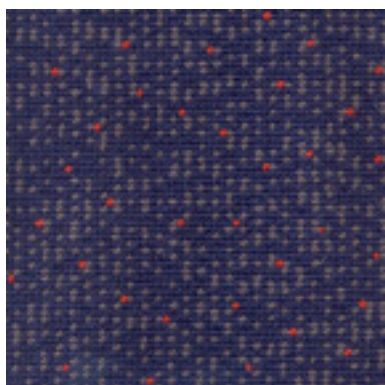
AC 1278



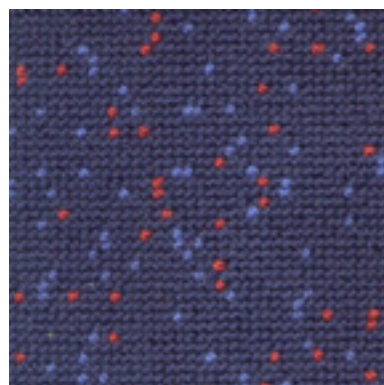
AC 1280



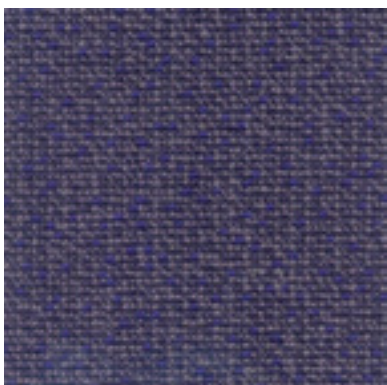
AC 1282



AC 1283



AC 1286



AC 1363



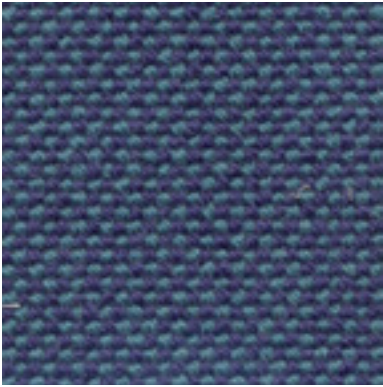
AC 1367



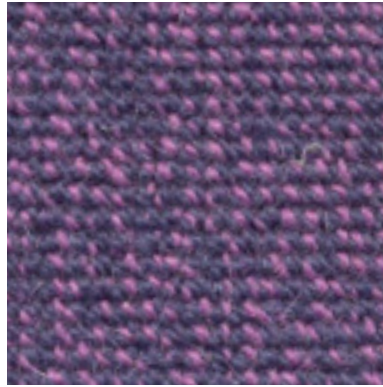
AC 1371



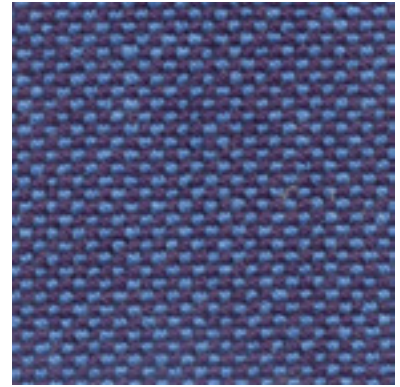




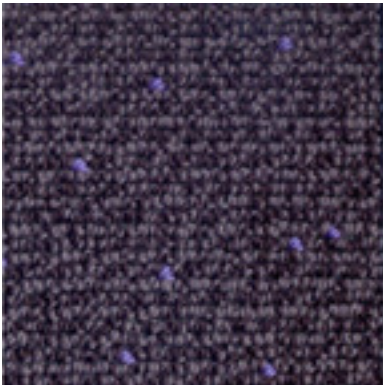
AC 1372



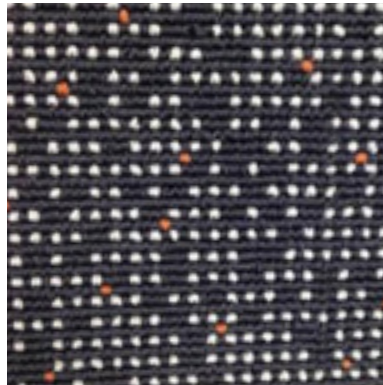
AC 1374



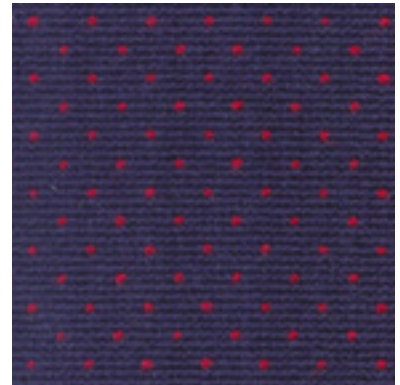
AC 1375



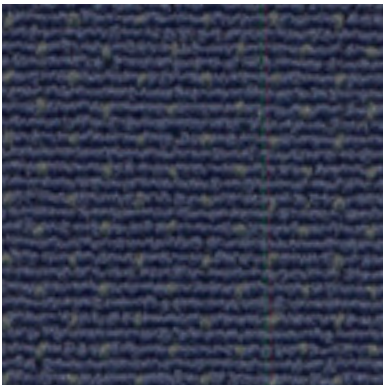
AC 1382



AC 1397



AC 1398



AC 1400



AC 1404







## Airlines using BIC Carpets

- ◇ Easyjet UK
- ◇ Titan UK
- ◇ Thomsonfly UK
- ◇ Corsair France
- ◇ XL Airways France
- ◇ Aigle Azur France
- ◇ Brussels Airlines Belgium
- ◇ Thomas Cook Belgium
- ◇ CSA Czech
- ◇ Travel Service Czech
- ◇ Ut Air Ukraine
- ◇ Kuwait Airways
- ◇ Biman Bangladesh
- ◇ Sama Saudi
- ◇ Tunisair
- ◇ Tap Portugal
- ◇ Nordwind Airlines
- ◇ Kingfisher Airways
- ◇ Corendon
- ◇ Blue Jet
- ◇ Abelag
- ◇ Mahan Air
- ◇ Ukraine International Airlines
- ◇ FL technics
- ◇ Aircraft Industries a.s.
- ◇ Aseman Airlines
- ◇ Nouvelair
- ◇ Syphax Airlines
- ◇ Air Niugini
- ◇ Rossya
- ◇ Jetairfly
- ◇ Sky Airlines
- ◇ Iranair
- ◇ Cobham Aviation





## Certificates

*It's very important to invest in Quality Management and Quality Control.*

At B.I.C.-Carpets we invest a lot in continuous research.

We're very proud to announce that B.I.C.-Carpets holds the EN 9100/AS 9100 certificate.



Interested to be on our reference list?

Sales Director Aircraft,

Philip Dermaut





## Recommended care and maintenance

*The longer carpet lasts the less it costs...*

Carpet performance starts with the right carpet selection. Proper maintenance for aircraft carpet will extend the life of the floor and provide significant savings in carpet replacement costs including labor for installation and removal, installation supplies, and fabrication of carpet parts. To be truly cost-effective, maintenance must be carried out with systematic frequency over the life of the carpet. Ironically, today's carpets are engineered to disguise soils and stains. This sometimes masks the need to vacuum and clean on a regular basis. A consistent and effective maintenance program can dramatically extend the life of your carpet. Other important factors for a consistent and effective maintenance program include:

**Clean air:** The cleaner the carpet, the better the air. Properly maintained carpet can act as a filter, improving the air in the aircraft cabin, resulting in better customer experience.

**A good reflection on your airline:** An effective maintenance program will protect your carpet investment. When your carpet looks good it's a positive reflection on your company.

## Keys to effective maintenance

**Preventive maintenance:** Dirt is everywhere. Keeping it out of the aircraft is easier and less expensive than removing it.

**Vacuuming:** Regular vacuuming is the most important part of any maintenance program.

**Spot removal:** Spots are inevitable, but they don't have to be permanent. Remove a spill quickly and there is less chance it will become a stain.

**Restorative/deep cleaning:** No matter how conscientiously you work at it, daily maintenance will still leave some soil behind. Regularly scheduled deep cleaning, using hot water extraction, is most effective at removing embedded abrasive soil.

## Recommended Cleaning Process for BIC Aircraft Carpet

### 1. Vacuum

- ◊ Thoroughly vacuum the carpet removing all loose/dry soil.
- ◊ A slow pass against the carpet pile is more effective than several quick strokes.
- ◊ Heavy traffic areas may require multiple passes (forward and backward) to sufficiently extract embedded soil.
- ◊ A vacuum brush will open up the tufts.
- ◊ Agitation will loosen the soil.
- ◊ Slow movement allows time for air to circulate through the face yarn and extract soil.

### 2. Spot Removal

- ◊ Inspect the carpet for spots such as gum, tar, grease, lipstick and other oily spots.
- ◊ Apply a Carpet Spot Remover.
- ◊ Do not overuse and follow up with a full carpet cleaning of the area.

### 3. Hot Water Extraction

- ◊ Use a detergent free extraction cleaner specially formulated for the hot water extraction process.
- ◊ Truck mounted extraction cleaners have higher heat, water pressure, and vacuum than portable units and will help the carpet clean faster and dry quicker. Truck mounts also allows spots such as gum to release easier from the carpet with less work. As with most things more is not better. While a truck mount has much higher capabilities for water pressure, 300 psi will flush carpet well without over wetting the backing and extending dry time. The ease of set up and tear down of a truck mount will cut production time in half.
- ◊ Portable extraction units can be used as well. Take a look at [www.steambright.com](http://www.steambright.com)

## Care of wool carpet

- ◇ The most important elements of maintaining your wool carpet investment includes the steps of thorough vacuuming, interim dry cleaning in high traffic areas and deep cleaning with warm (not hot) water.
- ◇ Vacuuming of wool loop pile constructions, a suction only vacuum should be used to prevent fuzzing.
- ◇ Vacuuming of wool cut pile carpets is most effective with the use of a rotary beater bar/brush.
- ◇ Periodic deep cleaning is necessary to remove imbedded soils. There are many cleaning agents, both dry and wet, that are suitable for use on wool carpet, make sure to use a detergent free extraction cleaner approved by the Woolsafe Organization ([www.woolsafe.org](http://www.woolsafe.org)) as safe for wool carpeting.
- ◇ Do not apply stain repellent treatments that contain silicone because they will significantly accelerate soiling.
- ◇ Care must be taken to not over-wet wool carpet.
- ◇ Immediate attention to spills will prevent the development of a stain. Remove the solid spill and use a white absorbent cloth/towel to absorb all of the spilled substance. Apply spot cleaning agent sparingly as defined in the spot removal section of this maintenance guide. Work from the edge towards the center of the spill. Never rub, as it may spread the stain.
- ◇ Test all spot and cleaning agents in an inconspicuous area to be sure it will not remove the carpet color.

## Additional maintenance factors

Many factors govern a carpet's lifespan and appearance; from the fiber and construction to the way the carpet is installed. However, none pay more dividends than proper care. The small amount of time that it takes to implement a well-planned maintenance program can dramatically extend the life of your carpet.

*And remember...the longer it lasts, the less it costs.*

## Color, pattern and construction

Color, pattern and construction all help determine how well your aircraft carpeting stands up to daily use. The best carpet selection takes both performance and aesthetics into account. **No maintenance program can overcome a poor carpet choice.** Improper color selection could increase your maintenance costs. Observe the appearance of the carpet for a period of time. If soiling is apparent, increase the frequency of vacuum cleaning in that area.